



AVIATION HANGARS

Aircraft

MRO

Exhibition

Military

Executive aviation

Engineered to outperform
all **operational needs**

www.irmarfer.com


IRMARFER
STRUCTURES

WHY IRMARFER?



We have **25 years of experience** in supplying structures for a wide range of uses worldwide. The **recognition** of our products and services is a reality on a **global scale**. Our wide experience in **designing, manufacturing, and delivering** structures, allied with our **constant investment** in **developing** and **innovating new solutions**, places us as the **Iberian leader** in the industry, and one of the worldwide reference players in the structures market.



COST-EFFECTIVE

Less expensive than traditional buildings. They require less material and labor to manufacture, transport, and assemble, making them a cost-effective option for many applications. Possible to achieve **70% of cost savings** when compared to a permanent building.

FLEXIBILITY

We can design structures of **any size**, and install them in almost any location. We can sell or hire for the time that suits your needs. The structures can be **modified or relocated** to fit your business requirements.

QUICK INSTALLATION

Easy to transport, assemble, and reassemble, a temporary structure can be **installed in a few days**, reducing labor costs and minimizing disruptions to ongoing operations.

RISK MANAGEMENT

In uncertain times, a temporary building is a **lower risk option** than constructing a permanent facility.



SAFETY

Independent of the purpose, our structures follow all the specific requirements regarding **stability** and **safety**. Our structures are made of fire, snow, and windproof materials and are in compliance with EN 13782 for temporary structures and any applicable code or standard for permanent structures.

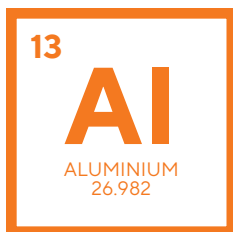


DURABILITY

All of our structures are resistant to environmental influences and can have a **useful life of up to 60 years**. Such characteristics are possible due to the use of **high-quality materials** and state-of-the-art processing methods. They can withstand cyclones, storms, rain, and strong sunlight for long periods.



CE Our products are CE compliant



IRMARFER ALUMINIUM SYSTEM

Why choose aluminium?

1

ADAPTABLE & RELOCATABLE

Aluminium is a highly versatile material, so it can be fabricated into a wide range of shapes and sizes. It's also lightweight so it's easy to transport, assemble, disassemble and relocate the structures. The modular system allows to expand and adapt the structures to all needs.

2

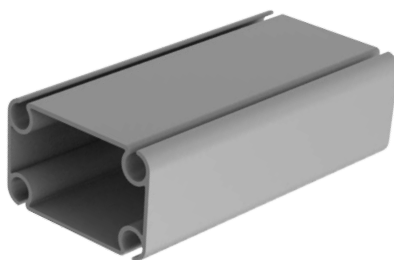
LOW MAINTENANCE

Aluminium requires minimal maintenance, which makes it a cost-effective material. Unlike other metals, like steel, aluminium is naturally corrosion-resistant, so it does not need to be painted or coated to protect it from corrosion.

3

SHORT BUILDING TIME

All products are designed and produced for a simple and fast assembly process. The assembly of all elements is done by clicking and/or bolting methods, reducing the construction time.



4

RECYCLABLE & SUSTAINABLE

Aluminium is 100% recyclable, it can be recycled over and over again without losing its properties. Which makes it an environmentally friendly. It has an extended service life and less waste of resources. Low CO2 footprint.

5

TRANSPORT & LOGISTICS

Due to its low density, malleability and lightweight, aluminium is easy to transport. Doesn't require extensive protective measures, reducing transportation costs, and it also has a lower environmental impact.

ALUMINIUM CONSTRUCTION VS STEEL CONSTRUCTION

Density: The density of aluminium is about one-third that of steel

Maintenance of buildings:

- Aluminium can be 8 times cheaper to maintain than steel, in an aggressive environment
- Aluminium can be 5 times cheaper to maintain than steel, in a normal environment.

IRMARFER ALUMINIUM SYSTEM

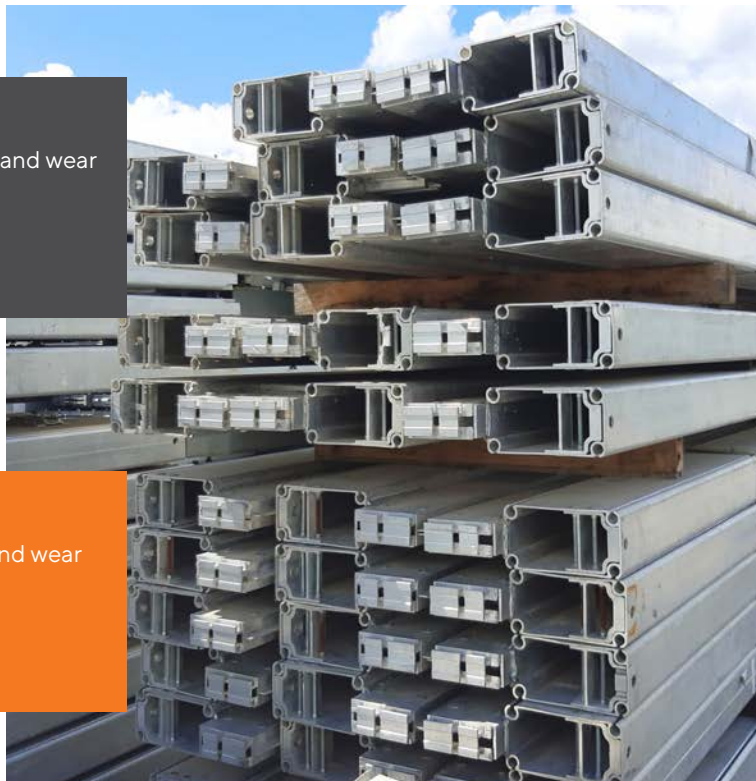
Aluminium Options

NON-ANODIZED ALUMINIUM

- more susceptible to corrosion, scratches, and wear
- uneven appearance
- less expensive
- faster to delivery

ANODIZED ALUMINIUM

- more resistant to corrosion, scratches, and wear
- more consistent appearance
- more durable
- more expensive



LACQUERED ALUMINIUM

Lacquered aluminium means that the aluminium has been coated with a layer of lacquer, a type of clear or colored varnish, that protects the aluminium and enhances its appearance. The lacquer coating provides a **smooth** and **glossy finish** that is **highly resistant** to corrosion, scratches, and wear.

Lacquered aluminium is commonly used in our padel and tennis structures.

E.g.: brown



E.g.: green



E.g.: black



AVIATION HANGARS

Irmarfer's hangar systems are **flexible** and **modular** options for almost every space solution. They are an **innovative, cost-effective solution with high-quality patterns** that can be adapted for both **civil** and **military** sectors. Modular construction allows designing solutions with large spans and unlimited lengths.

Our engineering team can develop a tailor-made solution, adapted to the client's requirements and the constraints of existing spaces.

KEY ADVANTAGES

- **Large door options**, customized by our partners
- Fully and easily **relocatable**
- **Scalability**
- **Short or long-term** use
- **Fast installation**



RESISTANCES

- Fire System RE30 (F30)
- Burglar-resistant security doors (RC3 - DIN EN 1627)
- Wind loading - EN 13782 or any applicable code or standard
- Snow loading - 0,1kN/m²
- Extreme weather environments



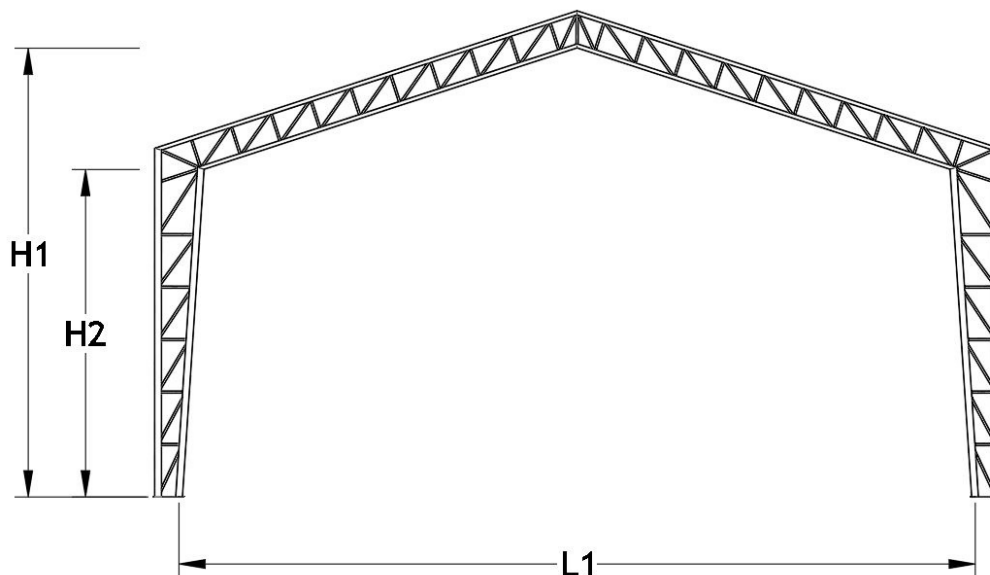
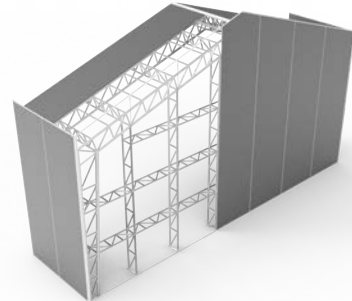
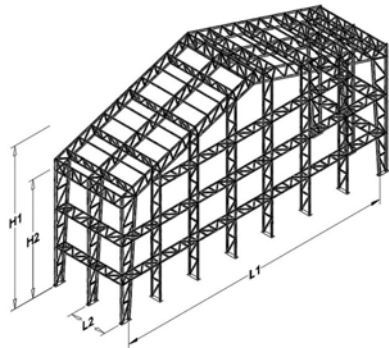
MATERIALS

- Aluminium alloy 6082 T6
- Covers: PVC, insulating panels, corrugated steel sheets, sandwich panels
- Doors: sectional and sliding options



AVIATION HANGARS

A-FRAME FLEXSPAN

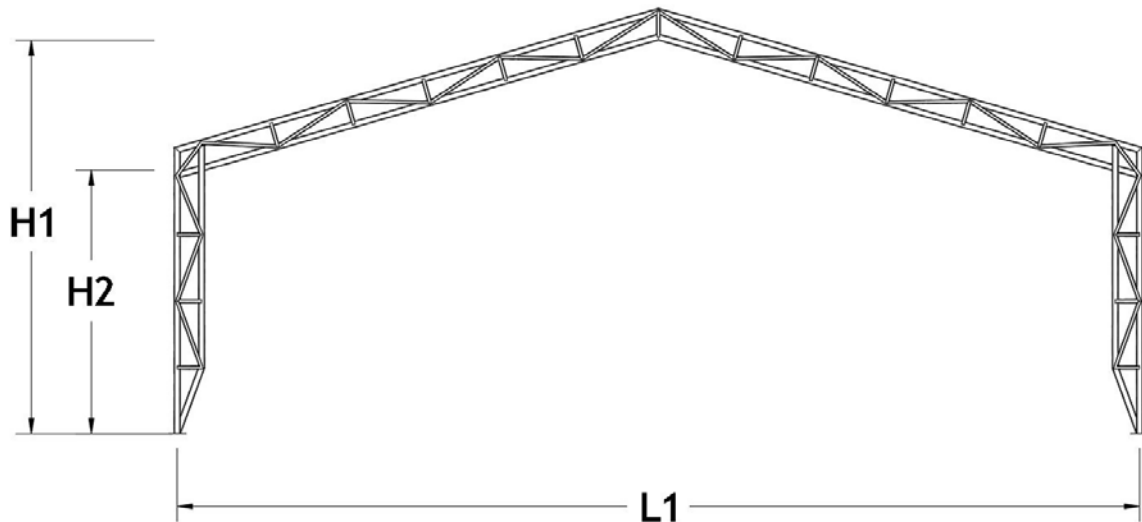
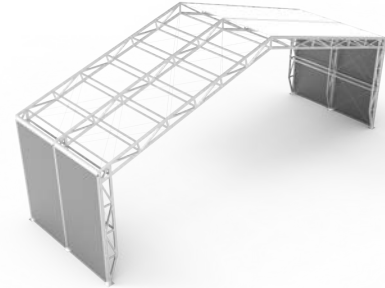
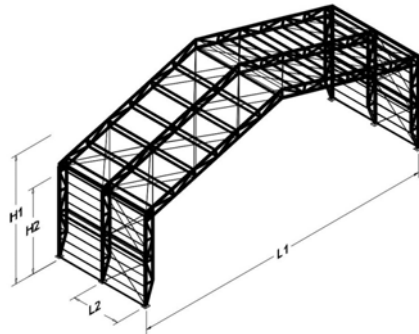


Specifications	Measure						
Width	L1	20m	30m	40m	50m	60m	70m
Side height - Up to	H2	10m	10m	10m	10m	10m	10m
Ridge height	H1	12m	13m	15m	17m	19m	21m
Bay distance / grid	L2	5m	5m	5m	5m	5m	5m
Total Length		No limit. Expandable with the grid.					
Rigging Capacity - Up to	Per frame	6 tonnes	6 tonnes	6 tonnes	6 tonnes	6 tonnes	6 tonnes
Max. wind speed - Up to		195km/h					
Snow load		0,1kN/m ²	0,1kN/m ²	0,1kN/m ²	0,1kN/m ²	0,1kN/m ²	0,1kN/m ²

Note: This is a summary of the main data and measurements of our standard structures. We can provide different options to match your requirements.

AVIATION HANGARS

A-FRAME AEROSHELL

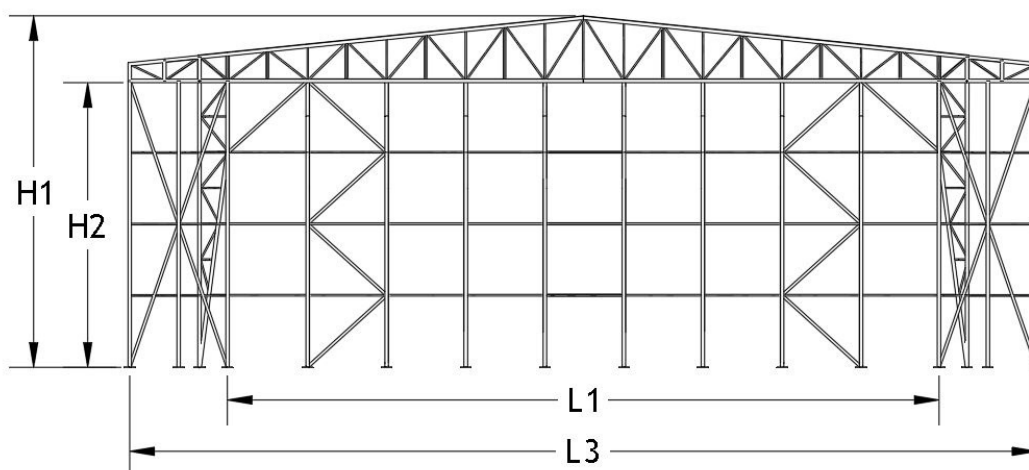
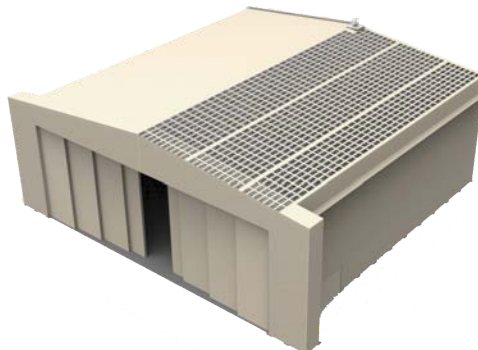
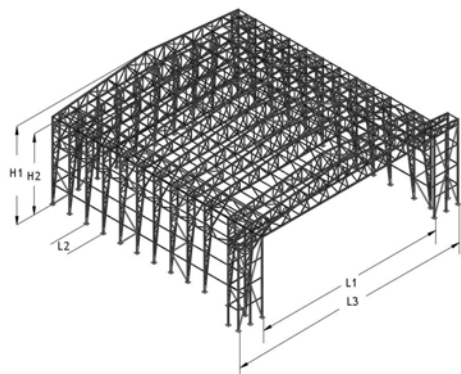


Specifications	Measure			
Width	L1	20m	30m	40m
Side height - Up to	H2	9m	9m	9m
Ridge height	H1	12m	13m	15m
Bay distance / grid	L2	5m	5m	5m
Total Length		No limit. Expandable with the grid.		
Rigging Capacity - Up to	Per frame	6 tonnes	6 tonnes	6 tonnes
Max. wind speed - Up to		195km/h		
Snow load		0,1kN/m ²	0,1kN/m ²	0,1kN/m ²

Note: This is a summary of the main data and measurements of our standard structures. We can provide different options to match your requirements.

AVIATION HANGARS

A-FRAME TRUSS CONSTRUCTION

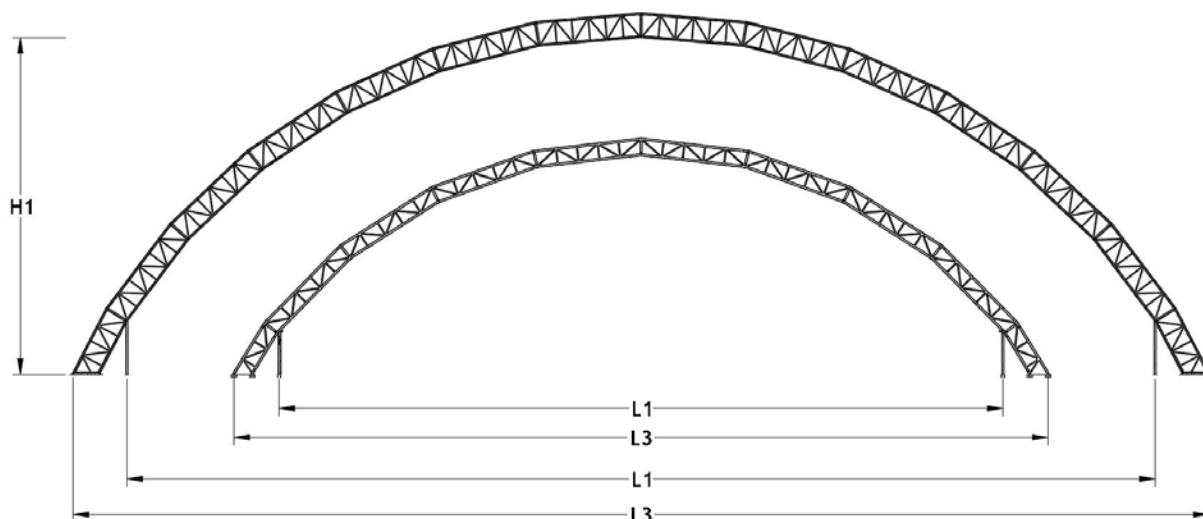
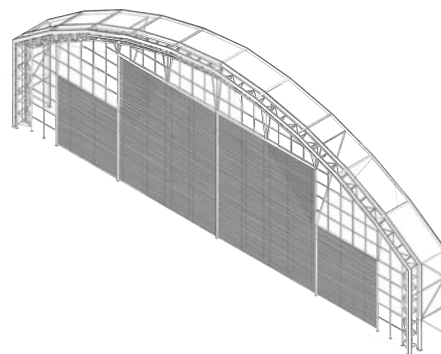
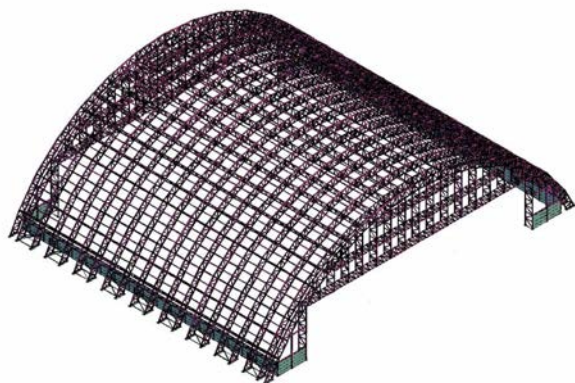


Specifications	Measure			
Width	L1	30m	40m	50m
Side height - Up to	H2	20m	20m	20m
Ridge height	H1	22m	24m	26m
Bay distance / grid	L2	5m	5m	5m
Total Length		No limit. Expandable with the grid.		
Rigging Capacity - Up to	Per frame	6 tonnes	6 tonnes	6 tonnes
Max. wind speed - Up to		195km/h		
Snow load		0,1kN/m ²	0,1kN/m ²	0,1kN/m ²

Note: This is a summary of the main data and measurements of our standard structures. We can provide different options to match your requirements.

AVIATION HANGARS

ARCH TRUSS CONSTRUCTION



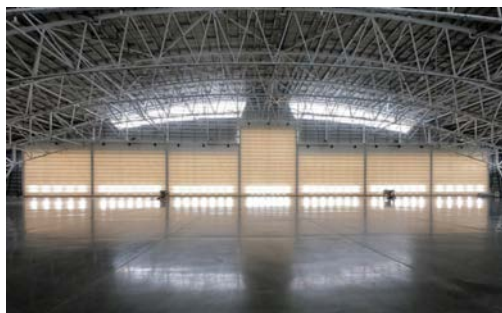
Specifications	Measure					
Inner Dimension	L1	60m	70m	80m	90m	100m
Outer Dimension	L3	68m	78m	90m	100m	110m
Ridge height	H1	18m	21m	27m	30m	33m
Bay distance / grid	L2	5m	5m	5m	5m	5m
Total Length		No limit. Expandable with the grid.				
Rigging Capacity - Up to	Per arch	7 tonnes	7 tonnes	12 tonnes	12 tonnes	12 tonnes
Max. wind speed - Up to		195km/h				
Snow load		0,1kN/m ²	0,1kN/m ²	0,1kN/m ²	0,1kN/m ²	0,1kN/m ²

Note: This is a summary of the main data and measurements of our standard structures. We can provide different options to match your requirements.

AVIATION HANGARS

HANGAR DOORS OPTIONS

Champion Door manufactures **vertical lifting fold-up doors** for very large openings. Vertical lifting fabric fold-up doors are an alternative for large-scale door locations, light yet durable, and with possibilities of high-quality heat and noise insulation. All Champion Door's doors are CE-marked and comply with currently valid standards.



CHAMPIONDOOR®

Shipyardsdoor presents **large vertical lift fabric doors**. Steel or aluminum body is designed for different operational conditions. The hangar doors can be manufactured 50X40 mt one piece and unlimited width with mullion doors. All doors are manufactured according to EN and ASTM standards with high safety levels.



SHIPYARDDOOR®

Jewers Doors manufactures creative yet functional door solutions to meet customers' requirements. The Esavian product range comprises two **horizontal sliding hangar door systems** and a **bottom rolling sliding folding door**, the Flatfold.

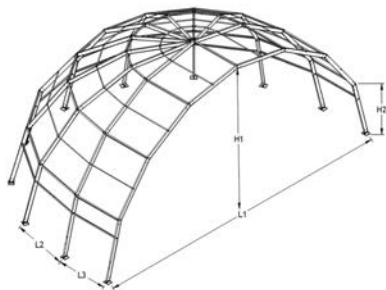


JEWERS
The Mark of Excellence & Innovation

AVIATION HANGARS

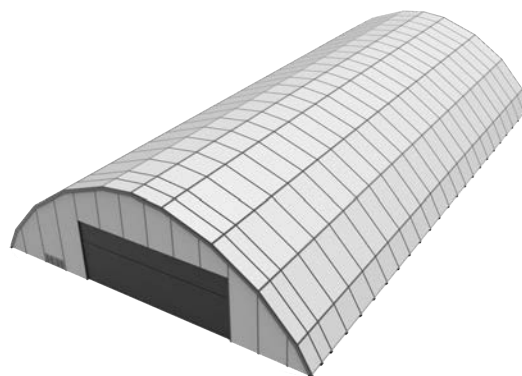
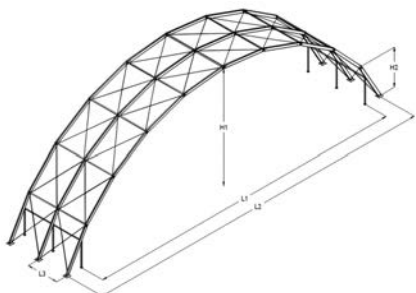
TEMPORARY OPTIONS

IGLOO



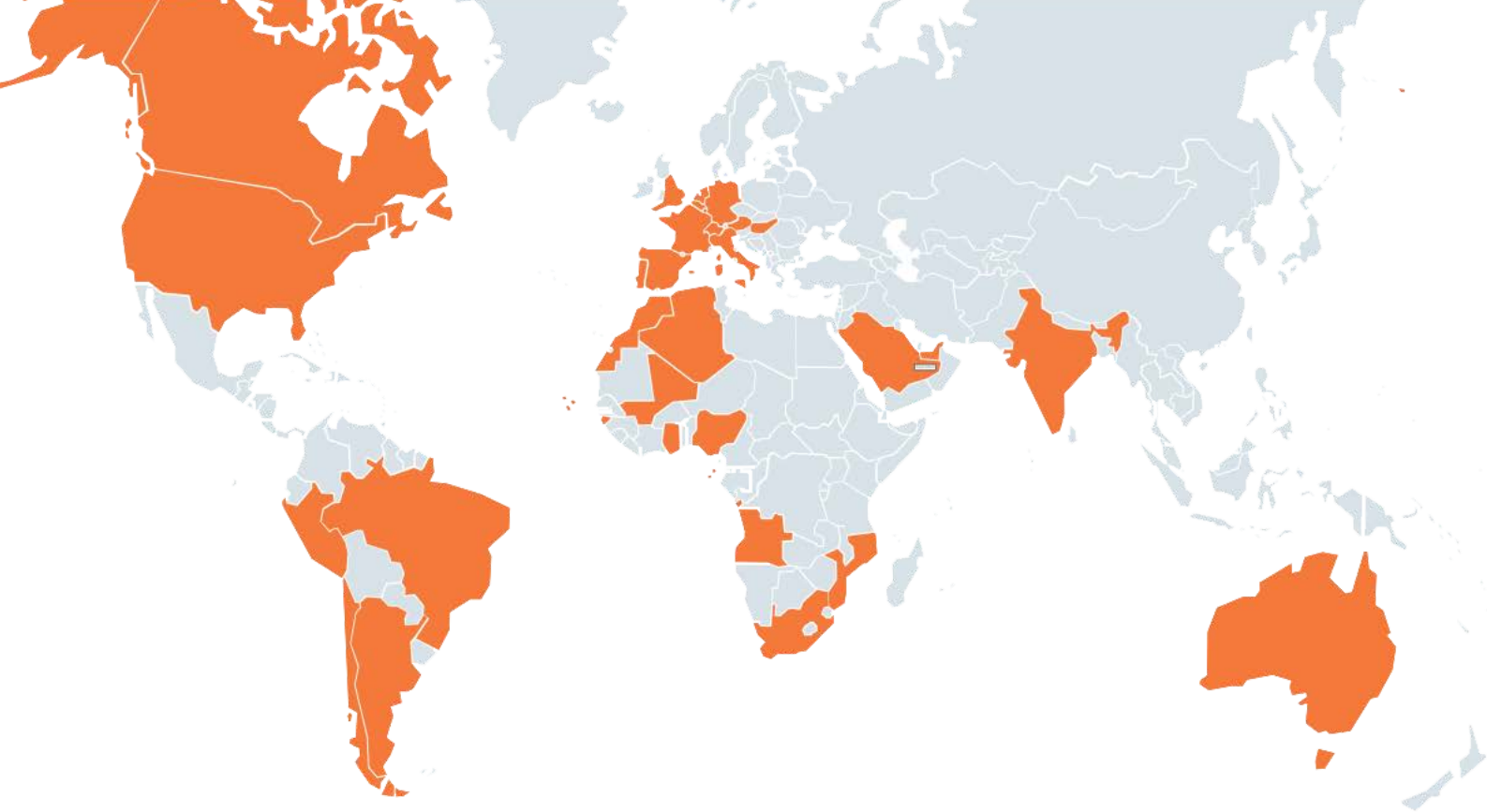
Specifications	Measure								
Diameter	L1	7,5m	10m	12,5m	15m	20m	25m	30m	40m
Distance between feet	L2	3,75m	3,85m	4,78m	4,63m	5,17m	5,55m	5,65m	4,0m
External ridge height	H1	4,65m	5,62m	6,44m	8,56m	10,23m	12,78m	14,4m	16,25m
Feet height	H2	2,4m	2,5m	2,5m	4,0m	4,0m	5,0m	5,65m	4,0m
Bay distance / grid	L3	5m	5m	5m	5m	5m	5m	5m	5m
Total Length		No limit. Expandable with the grid.							
Rigging Capacity - Up to	Per arch	300kg	300kg	300kg	450kg	450kg	750kg	1250kg	1250kg
Max. wind speed - Up to		100km/h							
Snow load		0,1kN/m ²	0,1kN/m ²	0,1kN/m ²	0,1kN/m ²	0,1kN/m ²	0,1kN/m ²	0,1kN/m ²	0,1kN/m ²

WAVE



Specifications	Measure			
Outer span	L2	45m	55m	75m
Inner span	L1	40m	50m	70m
External ridge height	H1	15,6m	18,4m	22,5m
Feet height	H2	6,1m	6,3m	4,7m
Bay distance / grid	L3	5m	5m	5m
Total Length		No limit. Expandable with the grid.		
Rigging Capacity - Up to	Per arch	1500kg	2000kg	2000kg
Max. wind speed - Up to		100km/h		
Snow load		0,1kN/m ²	0,1kN/m ²	0,1kN/m ²

Note: This is a summary of the main data and measurements of our standard structures. We can provide different options to match your requirements.



IRMARFER WORLDWIDE

Algeria
Angola
Argentina
Australia
Austria
Belgium
Brazil
Canada

Cape Verde
Chile
England
France
Germany
Ghana
Guinea-Bissau
Hungary

India
Italy
Luxembourg
Mali
Morocco
Mozambique
Netherlands
Nigeria

Peru
Sao Tome and Principe
Saudi Arabia
South Africa
Spain
Switzerland
United Arab Emirates
United States of America

CONTACTS

Rua do Pólo 6, 118
4590-373 Freamunde
Portugal

☎ (+351) 255 881 786
☎ (+351) 910 696 202
✉ info@irmarfer.com

📘 /irmarfer
📷 /irmarfer.official
🌐 /irmarfer-structures

www.irmarfer.com


IRMARFER
STRUCTURES


IRMARFER
GRAPHIX


IRMARFER
INTERIORS