



INDUSTRIAL & LOGISTICS

Warehousing

Production areas

Administrative areas

Flexible solutions
for modern **businesses**

www.irmarfer.com


IRMARFER
STRUCTURES

WHY IRMARFER?



We have **25 years of experience** in supplying structures for a wide range of uses worldwide. The **recognition** of our products and services is a reality on a **global scale**. Our wide experience in **designing, manufacturing, and delivering** structures, allied with our **constant investment** in **developing** and **innovating new solutions**, places us as the **Iberian leader** in the industry, and one of the worldwide reference players in the structures market.



COST-EFFECTIVE

Less expensive than traditional buildings. They require less material and labor to manufacture, transport, and assemble, making them a cost-effective option for many applications. Possible to achieve **70% of cost savings** when compared to a permanent building.

FLEXIBILITY

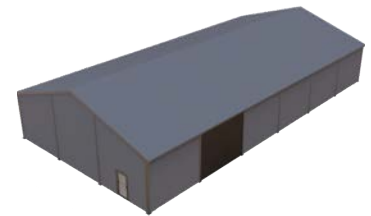
We can design structures of **any size**, and install them in almost any location. We can sell or hire for the time that suits your needs. The structures can be **modified or relocated** to fit your business requirements.

QUICK INSTALLATION

Easy to transport, assemble, and reassemble, a temporary structure can be **installed in a few days**, reducing labor costs and minimizing disruptions to ongoing operations.

RISK MANAGEMENT

In uncertain times, a temporary building is a **lower risk option** than constructing a permanent facility.



SAFETY

Independent of the purpose, our structures follow all the specific requirements regarding **stability** and **safety**. Our structures are made of fire, snow, and windproof materials and are in compliance with EN 13782 for temporary structures and any applicable code or standard for permanent structures.

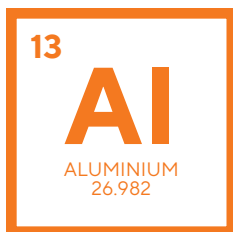


DURABILITY

All of our structures are resistant to environmental influences and can have a **useful life of up to 60 years**. Such characteristics are possible due to the use of **high-quality materials** and state-of-the-art processing methods. They can withstand cyclones, storms, rain, and strong sunlight for long periods.



CE Our products are CE compliant



IRMARFER ALUMINIUM SYSTEM

Why choose aluminium?

1

ADAPTABLE & RELOCATABLE

Aluminium is a highly versatile material, so it can be fabricated into a wide range of shapes and sizes. It's also lightweight so it's easy to transport, assemble, disassemble and relocate the structures. The modular system allows to expand and adapt the structures to all needs.

2

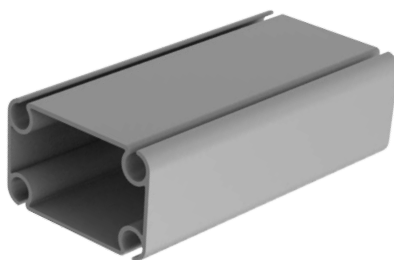
LOW MAINTENANCE

Aluminium requires minimal maintenance, which makes it a cost-effective material. Unlike other metals, like steel, aluminium is naturally corrosion-resistant, so it does not need to be painted or coated to protect it from corrosion.

3

SHORT BUILDING TIME

All products are designed and produced for a simple and fast assembly process. The assembly of all elements is done by clicking and/or bolting methods, reducing the construction time.



4

RECYCLABLE & SUSTAINABLE

Aluminium is 100% recyclable, it can be recycled over and over again without losing its properties. Which makes it an environmentally friendly. It has an extended service life and less waste of resources. Low CO2 footprint.

5

TRANSPORT & LOGISTICS

Due to its low density, malleability and lightweight, aluminium is easy to transport. Doesn't require extensive protective measures, reducing transportation costs, and it also has a lower environmental impact.

ALUMINIUM CONSTRUCTION VS STEEL CONSTRUCTION

Density: The density of aluminium is about one-third that of steel

Maintenance of buildings:

- Aluminium can be 8 times cheaper to maintain than steel, in an aggressive environment
- Aluminium can be 5 times cheaper to maintain than steel, in a normal environment.

IRMARFER ALUMINIUM SYSTEM

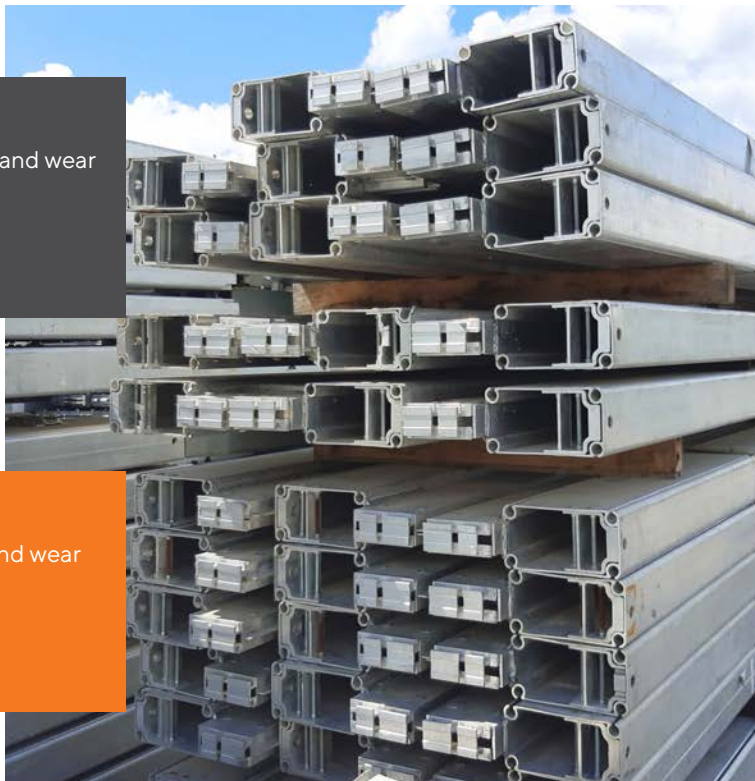
Aluminium Options

NON-ANODIZED ALUMINIUM

- more susceptible to corrosion, scratches, and wear
- uneven appearance
- less expensive
- faster to delivery

ANODIZED ALUMINIUM

- more resistant to corrosion, scratches, and wear
- more consistent appearance
- more durable
- more expensive



LACQUERED ALUMINIUM

Lacquered aluminium means that the aluminium has been coated with a layer of lacquer, a type of clear or colored varnish, that protects the aluminium and enhances its appearance. The lacquer coating provides a **smooth** and **glossy finish** that is **highly resistant** to corrosion, scratches, and wear.

Lacquered aluminium is commonly used in our padel and tennis structures.

E.g.: brown



E.g.: green



E.g.: black





INDUSTRIAL & LOGISTICS SOLUTIONS

Industries have a constant need for spaces that fit their specific needs. They need **fast**, **economical**, and flexible solutions. Irmarfer can provide **flexible** and **modular** structures for **industrial** or **productive spaces**, warehouses, or additional areas for offices and technical premises. Our structures can be specified in any size with a variety of accessories and options, including insulated panels, when required.

These solutions can be installed at almost any location, with **easy** and **quick installation times**, reducing **labor costs**. The aluminium framework gives it the highest **stability** and **durability**, guaranteeing **safety** and **efficiency**.

KEY ADVANTAGES:

- Scalability
- Tailor-made solution
- Fully modular for maximum flexibility
- Cost-effective
- Quick to install
- Risk management



OPTIONS:

- Non-insulated
- Semi-insulated
- Fully-insulated



INDUSTRIAL & LOGISTICS SOLUTIONS

CONFIGURATIONS AVAILABLE



01

NON-INSULATED

- Soft PVC roof and sidewalls
- ABS PVC panel
- Corrugated steel sheet



02

SEMI-INSULATED

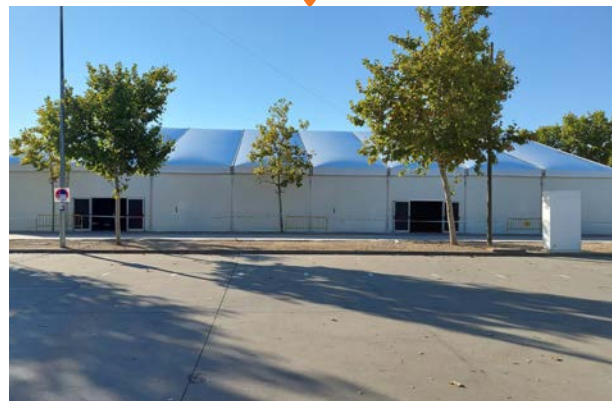
- Double-layer PVC roof
- Sandwich panel wall
- Thermo inflatable PVC roof



03

FULLY-INSULATED

- Insulating sandwich panels both on the roof and sidewalls

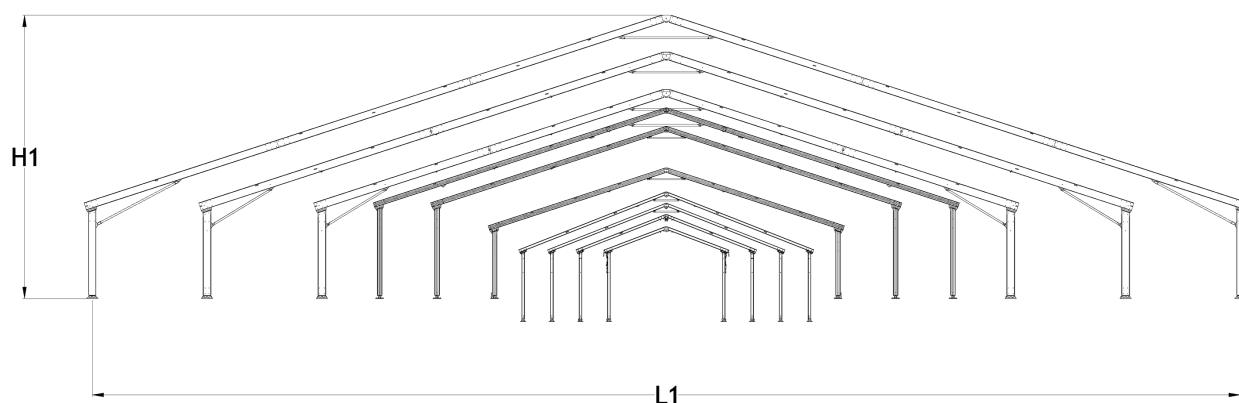
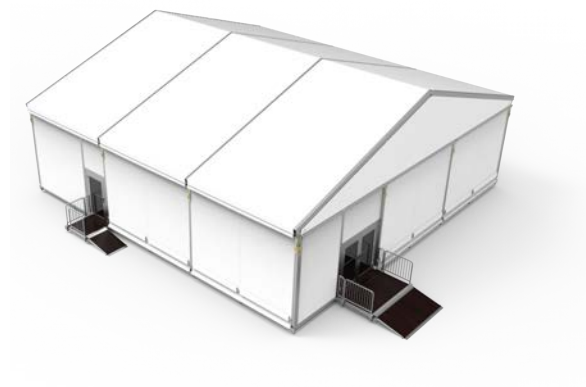
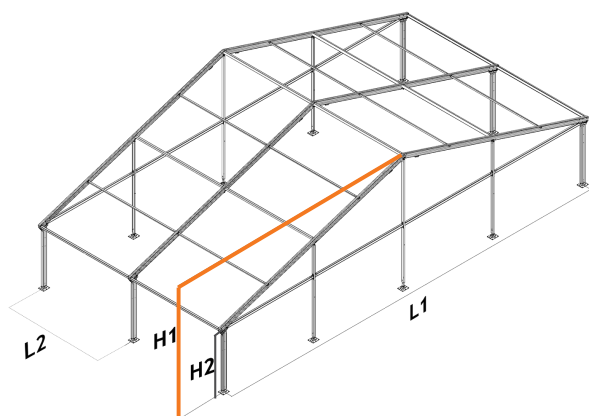


The Engineering Department can define the best type of cladding materials according to the customer's needs.

Extra accessories available: sectional gates, double doors, man doors, windows, LED lighting, HVAC, gutter, inner partitioning, access ramps, etc.

INDUSTRIAL & LOGISTICS SOLUTIONS

TECHNICAL DATA



Specifications	Measure										
Width	L1	5m	7,5m	10m	12,5m	15m	20m	25m	30m	40m	50m
Side height	H2	3m	3m	3m	3m	3m	4m	4m	4m	4m	4m
Ridge height	H1	4,2m	4,7m	5,2m	5,7m	5,7m	7,5m	8,3m	9,1m	10,7m	12,4m
Bay distance / grid	L2	5m	5m	5m	5m	5m	5m	5m	5m	5m	5m
Total Length		No limit. Expandable with the grid.									
Rigging Capacity - Up to	Per arch	100kg	100kg	300kg	300kg	900kg	900kg	900kg	1200kg	1200kg	1200kg
Max. wind speed - Up to		100km/h									
Snow load		0,1kN/m ²	0,1kN/m ²	0,1kN/m ²	0,1kN/m ²	0,1kN/m ²	0,1kN/m ²	0,1kN/m ²	0,1kN/m ²	0,1kN/m ²	0,1kN/m ²

Note: This is a summary of the main data and measurements of our standard structures. We can provide different options to match the client's requirements.

